

**LEGEND**

- MAIN TUNNEL
- LINK SEWER
- CSO COLLECTOR
- CONNECTION PIPELINE
- VENTILATION DUCTS
- EXISTING RETICULATION SEWER
- WC EXISTING TRUNK SEWER
- SW EXISTING STORMWATER
- PROPOSED DESIGNATION BOUNDARY
- LID/STRUCTURE FLUSH WITH GROUND
- LID/STRUCTURE ABOVE GROUND



Plot Date: 10-Aug-12 9:42 AM  
 File path: P:\0538 - Central Interceptor\04\_Drawings\4.1\_Working\AEE\AEE\_Concent\General\DWG

DESIGNED	NL				
DES. CHECKED	JS	<i>[Signature]</i>	08/12		
DRAWN	AP	<i>[Signature]</i>			
DWG. CHECKED	NL		08/12		
REV'D P.MGR	JS				
APP'D P.DIR	CC				
BY	DATE				

OPERATIONS  
ASSET MANAGER

SITE LAYOUT AND DESIGNS INDICATIVE ONLY AND SUBJECT TO CHANGE DURING DETAILED DESIGN DEVELOPMENT

**AEE AUGUST 2012**

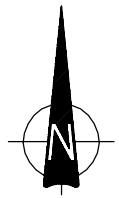


**CENTRAL INTERCEPTOR GENERAL**

**HAYCOCK AVENUE (L3S5) - PERMANENT WORKS PLAN**

CAD FILE AEE-MAIN-19.1	DATE 26-Jul-12
ORIGINAL SCALE A1	CONTRACT No. 0538
1:1000 A3	
DRAWING No. AEE-MAIN-19.1	ISSUE A





**LEGEND**

- MAIN TUNNEL
- LINK SEWER
- CSO COLLECTOR
- CONNECTION PIPELINE
- VENTILATION DUCTS
- EXISTING RETICULATION SEWER
- WC EXISTING TRUNK SEWER
- SW EXISTING STORMWATER
- PROPOSED DESIGNATION BOUNDARY
- LID/STRUCTURE FLUSH WITH GROUND
- LID/STRUCTURE ABOVE GROUND
- PROPOSED NOISE BARRIER



Plot Date: 10-Aug-12 9:43 AM  
 File path: P:\0538 - Central Interceptor\04\_Drawings\A13\_Working\AEE\AEE\_Consent\General\DWG

DESIGNED	NL				
DES. CHECKED	JS	<i>[Signature]</i>	08/12		
DRAWN	AP	<i>[Signature]</i>			
DWG. CHECKED	NL		08/12		
REV'D P.MGR	JS				
APP'D P.DIR	CC				
ISSUE	DATE	AMENDMENT	BY	APPD.	BY DATE
A	17/08/12	CONSENT ISSUE	AP	PR	APP'D P.DIR

OPERATIONS

SITE LAYOUT AND DESIGNS INDICATIVE ONLY AND SUBJECT TO CHANGE DURING DETAILED DESIGN DEVELOPMENT

ASSET MANAGER

**AEE AUGUST 2012**

**waterCare**  
services limited

COPYRIGHT - This drawing, the design and concept, remain the exclusive property of Watercare Services Limited and may not be used without approval. Copyright reserved.

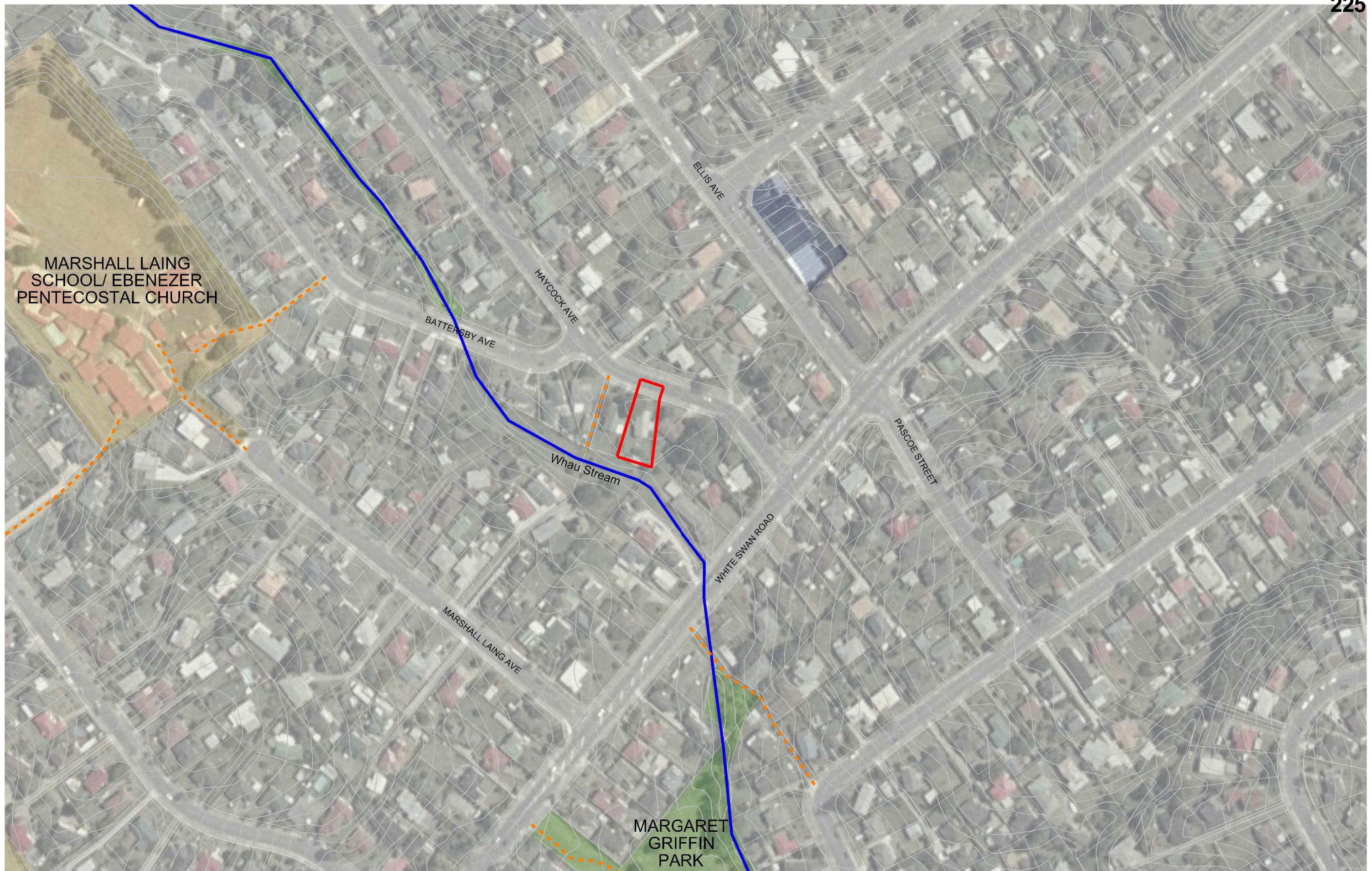
**CENTRAL INTERCEPTOR GENERAL**

**HAYCOCK AVENUE (L3S5) - CONSTRUCTION WORKS PLAN**

CAD FILE AEE-MAIN-19.2	DATE 26-Jul-12
ORIGINAL SCALE A1	CONTRACT No. 0538
1:1000 A3	
DRAWING No. AEE-MAIN-19.2	ISSUE A



A08301A\_212\_L355\_Haycock\_Ave\_revC.dgn





A08301A\_312\_L355\_Haycock\_Ave\_revC.dgn



Note: Site layout indicative only. Final layout dependant on Construction Management Plan





Note: Site layout indicative only. Final layout dependant on Site Reinstatement Plan



A08301A\_512a\_L355\_Haycock\_Ave\_revC.dgn



Existing View (from Haycock Avenue)



Proposed View - Indicative

Viewpoint Details

Date of Photography: 11:54am, 24 May 2012  
Horizontal Field of View : 75°

Data Sources: AECOM, AECOM site LIDAR (Nov. 2010), Auckland Council aerials (2010), BML

Note - Photomontages are indicative of the Permanent Works. Fields of view have been set up to accurately represent the Preliminary Concept Design for each site and its surrounds. Given the indicative nature of the photomontages, the true to scale viewing distance varies between each photomontages and has not been noted.



*Unallocated Page*





Wednesday, 5 December 2012

REVISION	DATE	DESCRIPTION
—	05.06.2012	Sourced from Watercare - AEE-MAIN-1.1.dwg
A	29.06.2012	Sourced from Watercare - AEE-MAIN-19.2_Draft.rvt

**Watercare Central Interceptor**  
**Haycock Avenue (L3S5) - Truck Tracking**



DRAWN: SP  
 DATE: 05.12.2012  
 SCALE: 1:500@A3  
 DWG NO:11117A59A

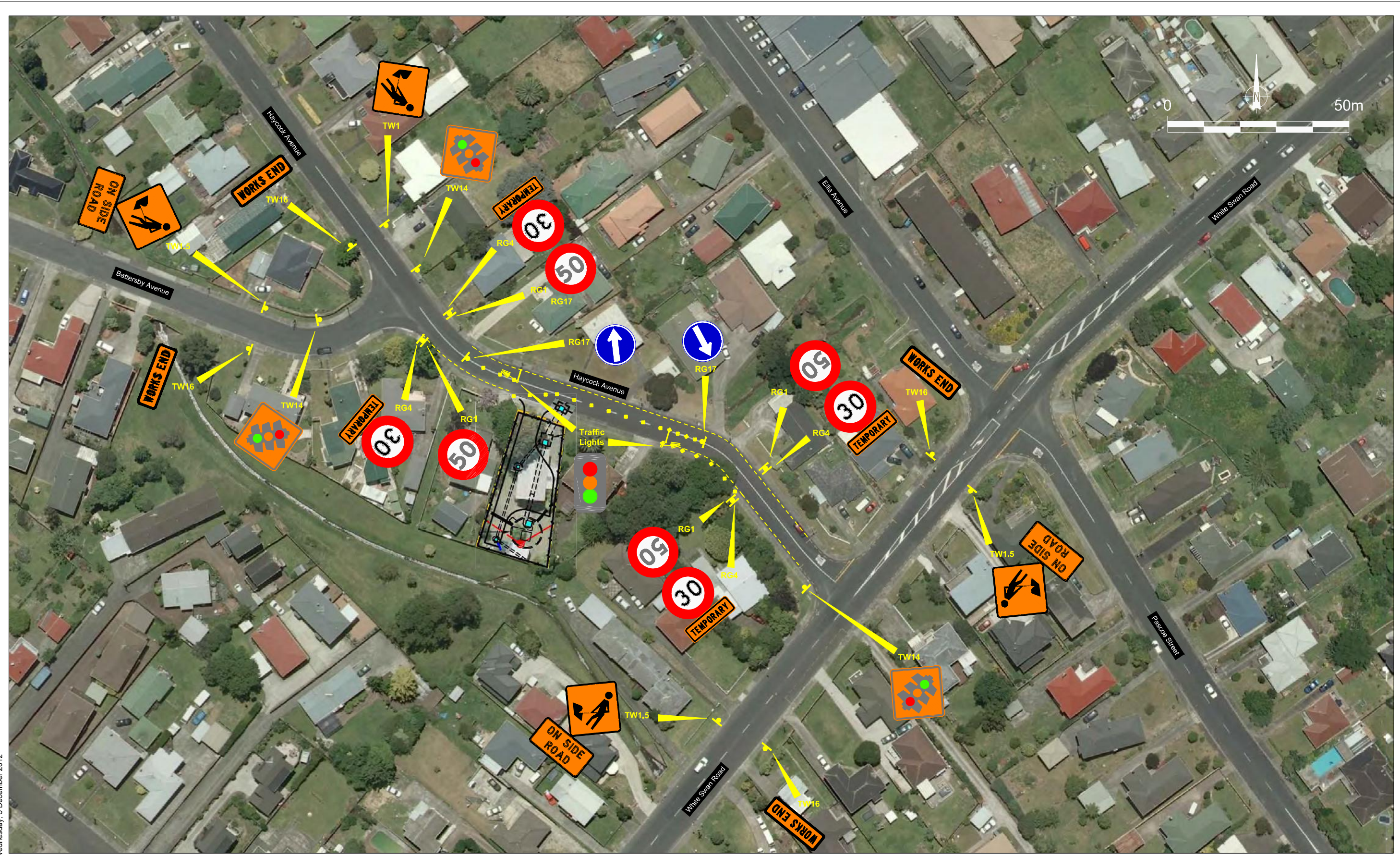


**38.v2**



*Unallocated Page*





Wednesday, 5 December 2012

REVISION	DATE	DESCRIPTION
—	29.06.2012	Sourced from Watercare - AEE-MAIN-19_2_Draft.pdf
—	—	—
—	—	—
—	—	—
—	—	—
—	—	—

Watercare Central Interceptor  
 CTMP Haycock Avenue (L3S5)

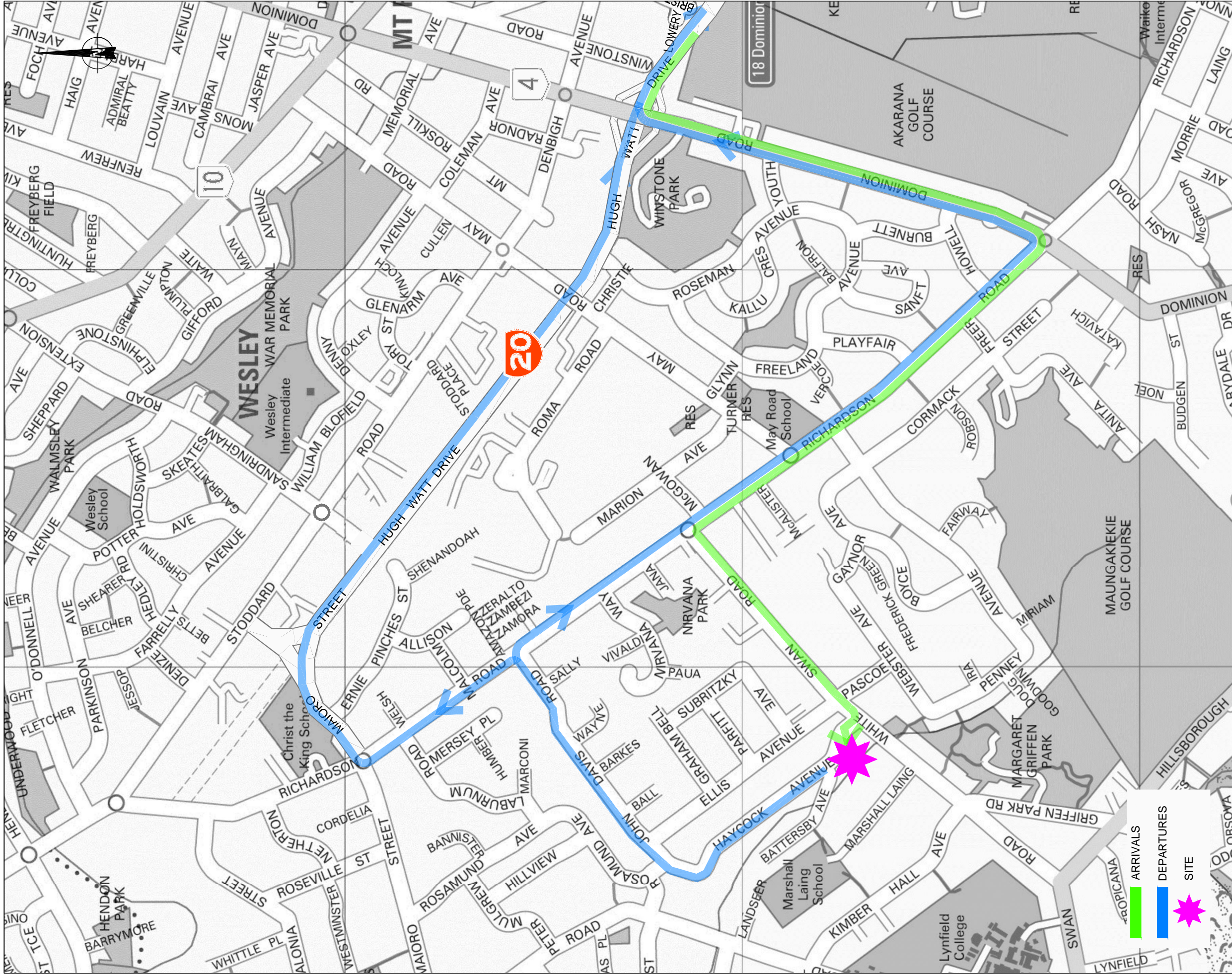


DRAWN: SP  
 DATE: 05.12.2012  
 SCALE: 1:1000@A3  
 DWG NO:11117A58A



39.v2





Friday, 19 July 2013

## Watercare - Haycock Avenue (L3S5)

### Truck Routes

Traffic Design Group



40.v2

SCALE: N.T.S